





We are a family-owned global forwarding company.

Since 1897 we have taken care of our customers with transport and logistics solutions that add value to their supply chain.

We specialize in commodities such as forest, steel, and agricultural products, and offer solutions for ocean freight, airfreight, and truck shipments. We are one of the world's top 10 sea freight forwarding companies.

We are a medium-sized enterprise. Our transport and logistics specialists enjoy freedom to make their own decisions – they are entrepreneurs within the company. Working with us is uncomplicated – optimizing the supply chains of our customers and ensuring that things run smoothly is part of our daily business. If something unplanned happens, then we adapt to it and offer solutions. Over the decades, through our industry focus, we have acquired profound knowledge of the business areas of our customers. Our employees are passionate service providers – we are happy to take care of things.

OUR

LOGISTICS SERVICES



Sea freight: oceans do not divide us - they unite us.

We are one of the world's largest sea freight forwarding companies. As such we have excellent partnerships with all notable shipping companies, and can offer you port and line connections that are tailored to your needs. Whether containers, bulk or project goods, as your partner we select the appropriate carrier for you. Multimodal solutions for pre-carriage and on-carriage round out our logistics service package. Thereby offering you punctual solutions tailored to your schedules.



Overland freight: we are always on the move for our customers.

Whether with our own trucks or through our fleet of subcontractors: when it comes to drivers, vehicles, and partners, we place the highest value on quality. Your goods are in safe hands and will be delivered cost-efficiently and on time for both conventional shipments or heavy and special transports.



Through rail transport we are able to counter the ever-increasing volume of traffic that occurs despite the roadway infrastructure remaining the same. We are an important partner of national and private railways and are therefore an expert contact for rail shipments.



Air freight: sometimes fast is not enough. That is when you need an air freight solution.

We coordinate and monitor your air freight shipments worldwide – including cross trades, combined transport, full and part charter shipments, freight consolidation, and tailored door-to-door concepts. We have access to a worldwide air freight network through our membership in the IFLN Network. We are also a regulated agent, hold an IATA license, and can offer you fair market prices through our membership in the IGLU.

OUR MISSION -

YOUR PARTNER

We are a family-owned global company and we help our customers to increase the value of their supply chains.

We raise service levels, shorten transit times, and reduce costs.

year of birth
1897 



>25
countries

logistics experts
950 

headquarters
 **Hamburg**



13,4
Mill. tons/year

750
Mill. € revenue/year



longest customer since



>50
locations

850,000
TEUs/year





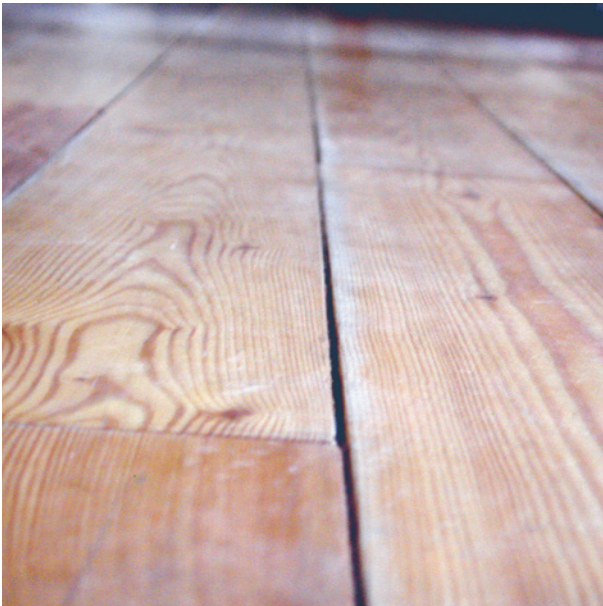
A SOLUTION FOR THE
FORESTRY
INDUSTRY

Paper is not resilient, but rather extremely sensitive.



Our regularly trained employees take care of your sensitive goods and offer you tailored logistics concepts for import and export shipments as well as for cross trading worldwide. With 10 million tons of transported shipments per year, we are the world's largest expert in forwarding paper and pulp.

Paper is our foundation. Whether paper rolls, pulp bales, lumber, or parquet boards, there's nothing we understand better than the challenges of transporting wood and paper products.





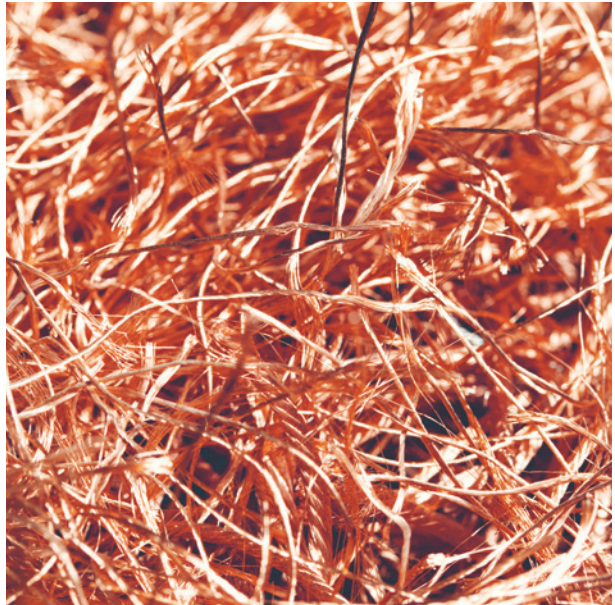
**A SOLUTION FOR THE
METALS, MINERALS
& CHEMICAL
INDUSTRY**

Marble, stone, iron,
and many other
heavy bulk goods
are our specialty.



Metals, minerals, and chemical products
have product-specific transport requirements.
Through our long-standing contacts in the
steel, construction materials, and chemical
industry we have gained profound knowledge
of their specific requirements.

Our packing and loading concepts, as well
as our professional handling of dangerous
goods, guarantee transport safety and
damage prevention in this area. We also
coordinate loading and cargo-securing
inspections through certified companies.





A SOLUTION FOR THE
**AGRICULTURAL
PRODUCTS &
FOOD INDUSTRY**

Food is our bread
and butter.



Large load quantities, cost-sensitive goods, and complex logistical demands – experience, agility, and creativity – are required for the handling of goods in the areas of agricultural products, food, and beverages.

We ship beer from Germany to the USA, wheat and hay from the USA to China, and canned goods from China to Germany – each shipment has its own challenges that we overcome by applying our broad experience and working together with you.



A SOLUTION FOR THE
**CONSUMER
PRODUCTS
INDUSTRY**

With us, nothing
is ready-made.



Our logistics solutions for importers and companies with production facilities abroad are tailored to the requirements of the individual customer. We present alternative routes and conditions in order to reduce the logistics costs per unit of the goods. Through our knowledge of service providers we can also identify solutions for returns processing, the sale of second-choice goods, or the reprocessing of articles.

Our EDP solutions for supplier, order, and supply chain management serve to monitor supplier performance through constant contact and monitoring of the planning data that is to be observed. This enables us to act quickly and flexibly in the event of any interruptions in the supply chain. We then develop solution-oriented proposals in order to still meet the final deadline.



A SOLUTION FOR THE
**MECHANICAL
ENGINEERING
INDUSTRY**

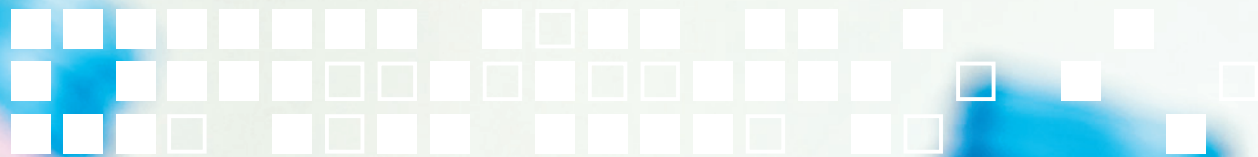
In this industry, the interlocking parts must work together.



Deliveries for the area of mechanical and plant engineering depend on the global coordination of various supply streams. As a logistics partner with a worldwide network we can offer you all-in-one solutions tailored to these requirements. We have many years of experience in the transportation of heavy cargo and oversized cargo.

From individual packing to storage, crane and installation works, to door-to-door delivery – high-quality machinery and systems are in safe hands with us.

But we are also happy to take care of the professional handling of conventional shipments in the area of mechanical and plant engineering.



A SOLUTION FOR THE
RECYCLING
INDUSTRY



Waste paper and scrap are not garbage but rather goods that we are happy to transport.



We have been active in the area of recycling logistics for 25 years and have extensive expertise regarding the statutory provisions for waste shipment. Thanks to regular participation in specialist conferences we are always kept informed on the latest changes to statutory regulations worldwide.

Whether waste paper, scrap metal, or used plastic, specialist employees take care of cost-effective and smooth solutions. Not the least of which is due to our close proximity to customers - we have branches located in the most important dispatch and receiving countries.



OUR STRENGTHS -
**YOUR
BENEFITS**

Straightforwardness is our trademark.

We are known for our rapid, easily understandable, and integrated full-service solutions – they form the core of our day-to-day work. You have one contact person for all of your needs and profit from a comfortable all-in-one solution.

Optimization is our strength.

We increase the performance and therefore the value of our customers' supply chains. We show our expertise in the improvement of service and transit times or the reduction of costs as necessary for specific needs. Our innovative EDP solutions make a decisive contribution towards this.

Nimbleness is the basis of our success.

Thanks to lean structures we are able to make quick decisions for the successful completion of projects. We are flexible and offer individualized processes and quick adaptations for your requirements.

Industry knowledge is our tradition.

Traditionally we place great value on industry, process, and product knowledge. Due to our proximity to customers and goods, we know exactly which transport options are the right ones for your requirements and products.

Taking care of it is our daily business.

We are passionate service providers. Highly-complex global supply chains do not always function smoothly. That is when we take care of things.



OUR
**CUSTOMER
SOLUTIONS**



CRUISE CONTROL®

Cruise Control: you will always stay on the right course with us.

These days, an efficient supply chain can be the deciding factor for success. This not only depends on the lowest freight costs but even more on clear structures in the transport service provider system. Through the combination of industry, process, and logistics knowledge we support you in the analysis of your supply chain and search for potential for improvement.

Our level of performance and experience can be seen in our comprehensive methodology for the controlling and improvement of your transport processes, as well as in our innovative technical solutions – through which we move your business forward.

Cruise Control – Tracking & Tracing

With our track & trace service we offer you access to up-to-date information on your transport processes. Whether it comes from us, the contracted carriers, or other service providers, all of the relevant information is shown to you in a clearly organized traffic light system. Automatic reports to your mobile phone or other systems guarantee that you do not miss any important information.

Cruise Control – Collaboration

Our collaboration platform offers you positive, efficient collaboration across corporate boundaries with up-to-date information at all times without any misunderstandings. For this we adapt to your individual processes, roles and responsibilities.

Cruise Control – Control Tower

We know that you can only manage what you can measure, so we make your logistics processes measurable. With the aid of clear key process data we show you the performance of your process chain and identify its potential for improvement. This makes the success of implemented changes transparent and continuously improves your processes.



OUR
ADDITIONAL
SERVICES

Supply chains – whether global or intracontinental – are complex. More than 20 different parties can easily be involved. In these cases it often makes sense to group services and have a combined offer.

Stowage, cargo securing, stowage consulting

If you aren't stowing properly then you may as well just pack it up and go home.

The weight limits according to means of transport, weight distribution, packaging function, lashing options, and climate impacts must be taken into consideration. Choosing the right means of transport and optimal stowage increases the stowage level and lowers costs.

Handling, storage, picking

Your goods will feel right at home with us.

Thanks to our trained staff we are attuned to the specific goods properties and select loading equipment, warehouses, and transfer stations, according to the cargo. We sometimes develop our own loading and unloading equipment in order to guarantee damage-free handling. Our use of the most advanced technology ensures transparency and efficiency in this regard.

Transport and warehouse insurance, claims processing

You can rest assured that we will do everything possible to ensure the safe transport of your goods.

Our insurance department gives you quick and expert advice and offers inexpensive premiums. We will also take care of claims processing and take this time-consuming work off your hands, if necessary.

Customs clearance, transit documentation, customs clearance consulting

No trouble with customs.

Our experienced customs experts will advise you individually and identify how you can keep costs and risks as low as possible. We inspect your goods precisely and guarantee that you will not have to pay customs duties and fees that are too high while meeting the necessary compliance with all of the applicable governmental regulations.

Dangerous goods transport and storage

When it comes to dangerous goods we don't play around.

Compliance with the strict national and international requirements in the areas of safety and environmental protection is absolutely mandatory. Our specially-trained employees know how to correctly handle dangerous liquid and solid goods.

Project shipping

Nothing is too heavy or too wide for us.

A 50-ton cast part or a five-meter-wide packing machine – these are just some of the everyday challenges that project logistics face. Heavy loads with a high safety factor, whether out of gauge or special equipment, are our core services, especially when it comes to individual approvals, customs clearance, and packaging.



OUR
LOCATIONS

On location for you.

We have over 50 locations worldwide that are selected according to the core markets of the industries on which we focus. We are therefore in direct proximity to you and just as close to your goods. We understand the local circumstances and speak the same language.

To drive our global presence we work together with select local partners who pursue our mission with us.



OUR STANCE -

YOUR GOOD FEELING

Esteem

Friendliness, politeness, and respect are a matter of course for us – regardless of hierarchies and cultures. We pay attention to these values worldwide, both among employees and in the selection of partners.

Willingness to perform

Every day we work to provide you with the best services and solutions. This can only happen through commitment, courage, and dedication – characteristics embodied by each of our employees. As a company we allow the necessary freedom for this and promote motivation.

Partnership

As a partner on equal footing we place great value on reliability, honesty, and trust. We believe in developing things together. Naturally, these principles don't only apply during the contact with customers and partners, but also within the company.

Responsibility

We assume responsibility in every respect for our customers, partners, and colleagues. For us, ethical awareness and human activity must meet ecologically-sustainable planning, continuous employee development, and a sense of duty toward customers' goods and data.

Fr. Meyer's Sohn (GmbH & Co.) KG

For more information and insights visit:
www.fms-logistics.com

Requests and assistance:
Fr. Meyer's Sohn (GmbH & Co.) KG
Grüner Deich 19
20097 Hamburg | Germany
e-mail: info@fms-logistics.com
Tel: +49 40 2393 0